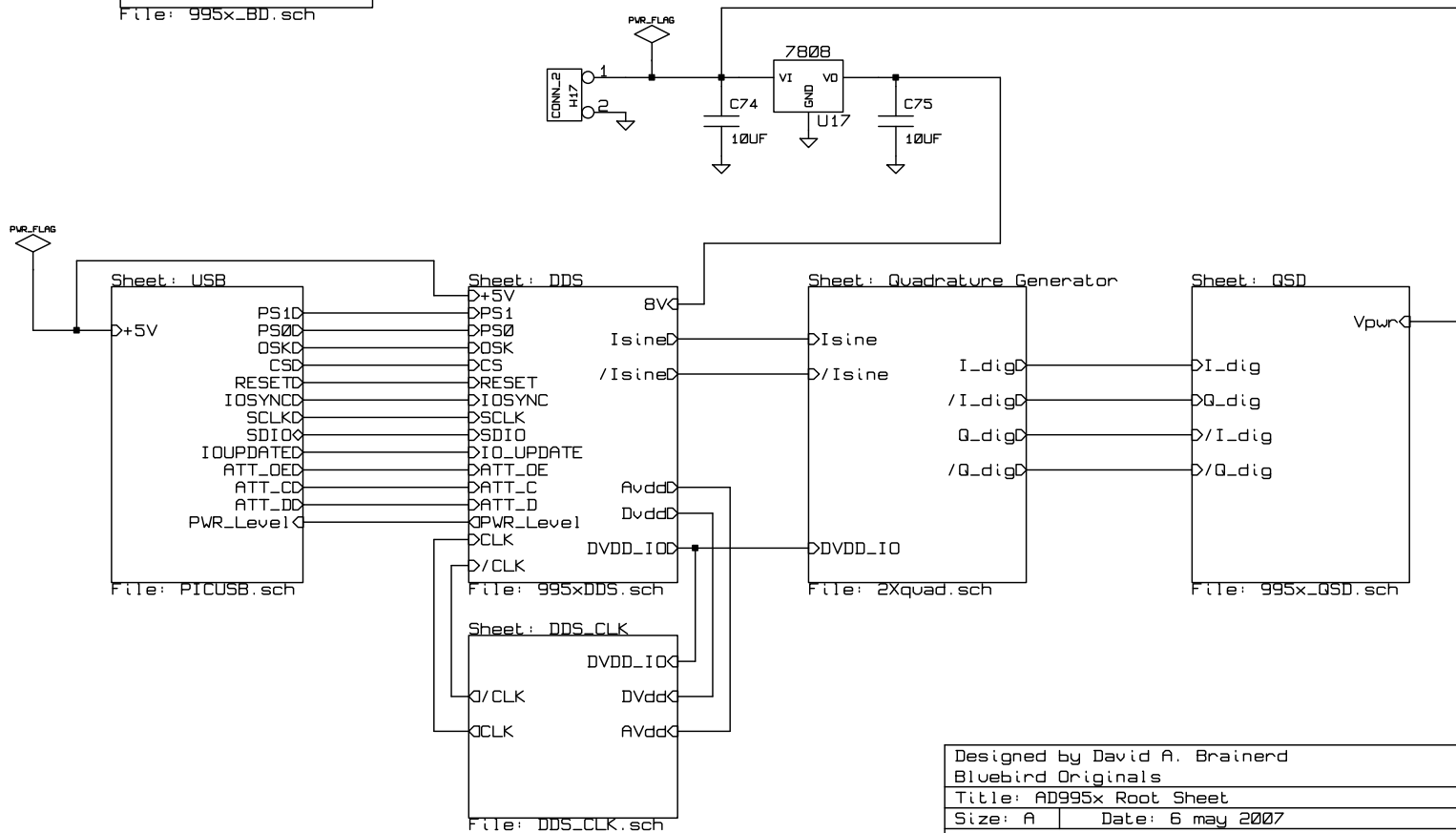
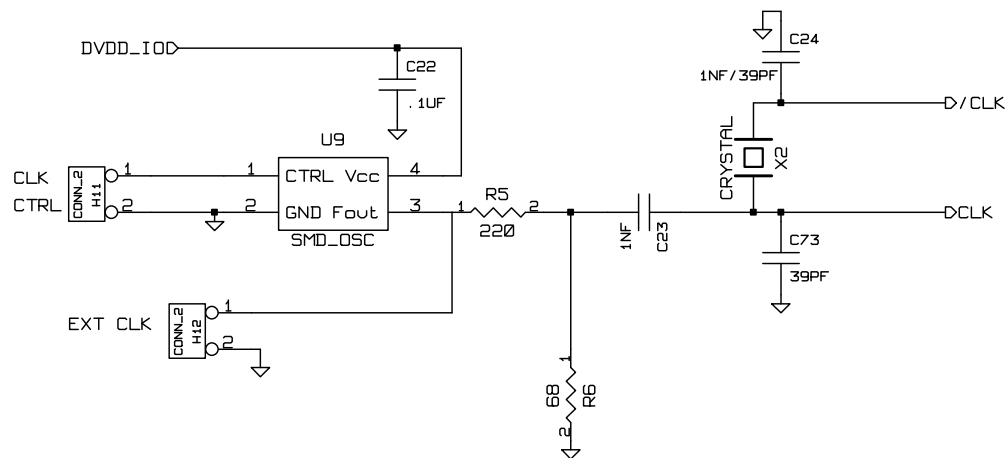


Sheet: Block Diagram

File: 995x\_BD.sch



Designed by David A. Brainerd	
Bluebird Originals	
Title: AD995x Root Sheet	
Size: A	Date: 6 may 2007
KiCad E.D.A. EESchema (2007-02-16)	Rev: Sheet: 1/7



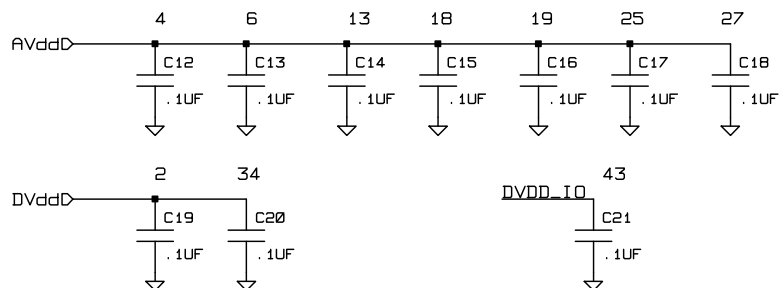
### CLOCK OPTIONS:

Crystal: Omit all but crystal and 2 39pF caps

SMD OSC: Omit crystal and 39pF on CLK line. Put 1nF from /CLK to GND.

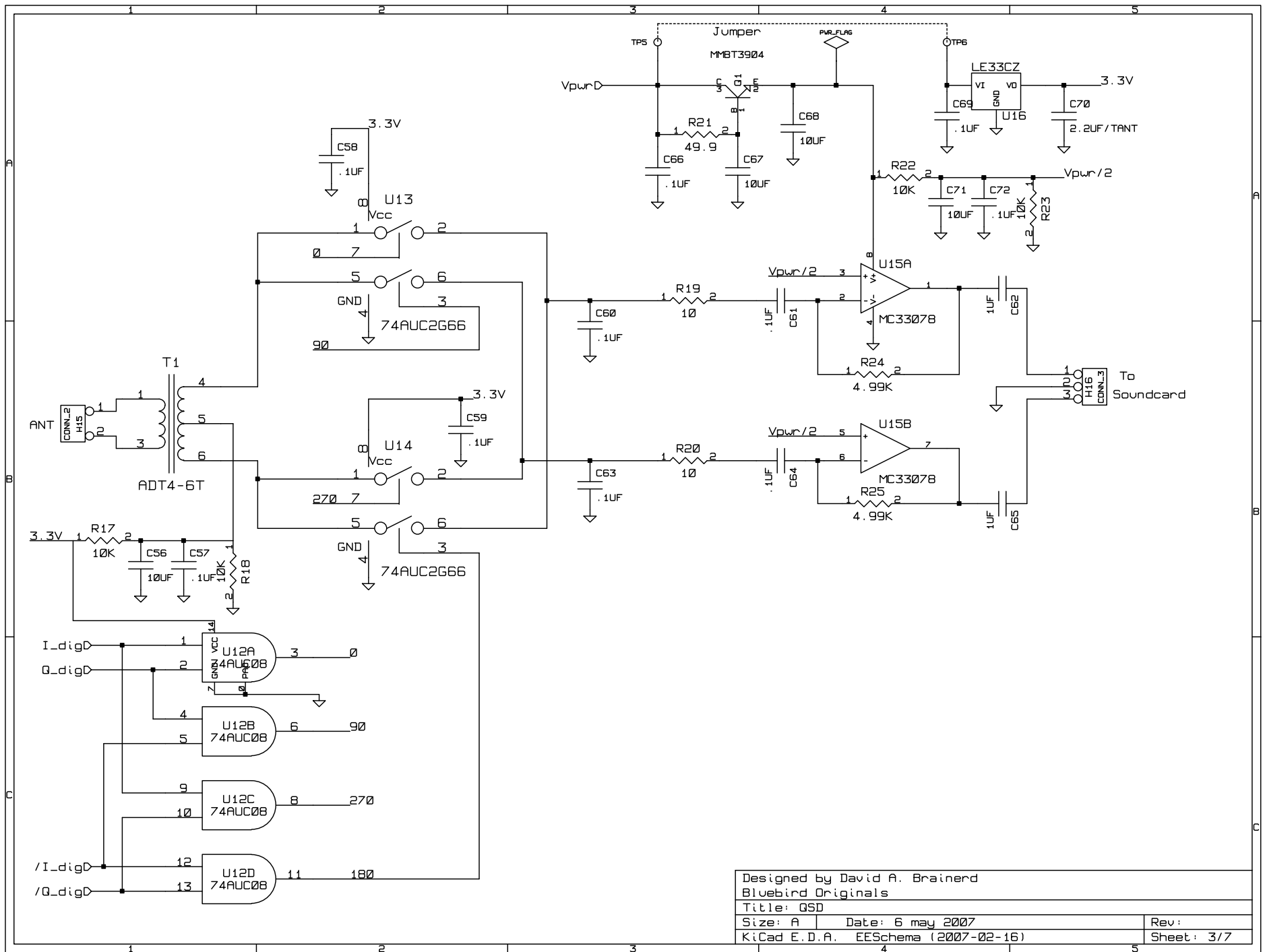
The 220 and 68 ohm resistors are for a 3.3V clock. Change as required for other amplitudes.

EXT OSC: Omit SMD\_OSC (or disable from pin 1), 39pF from CLK to GND, put 1nF from /CLK to GND, adjust 220 and 68 for proper amplitude. Omit crystal.

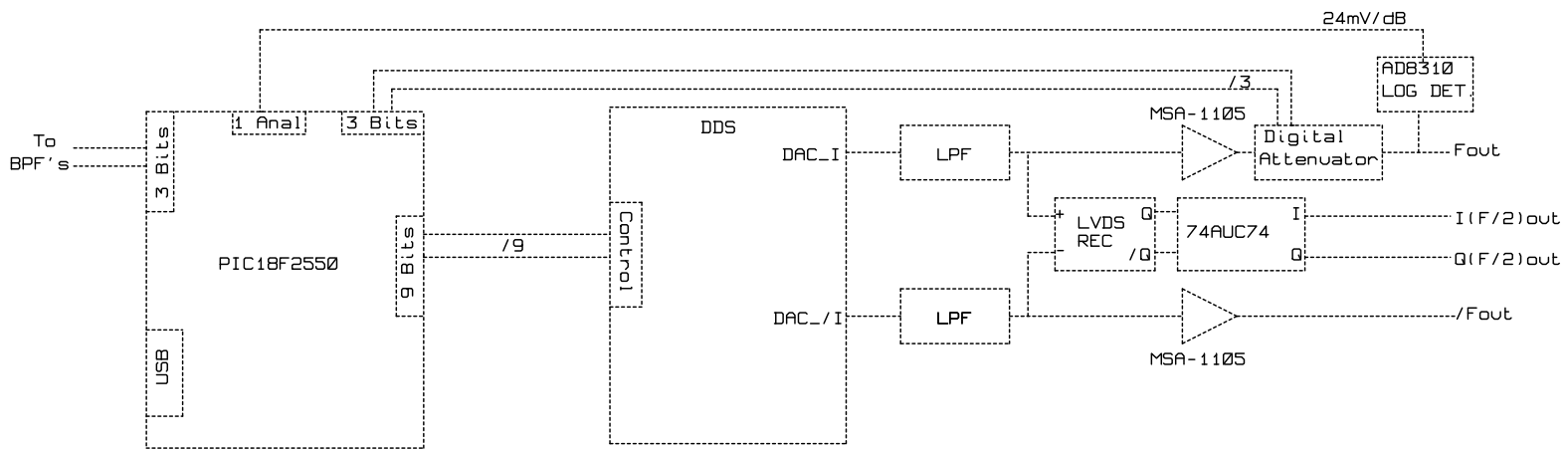


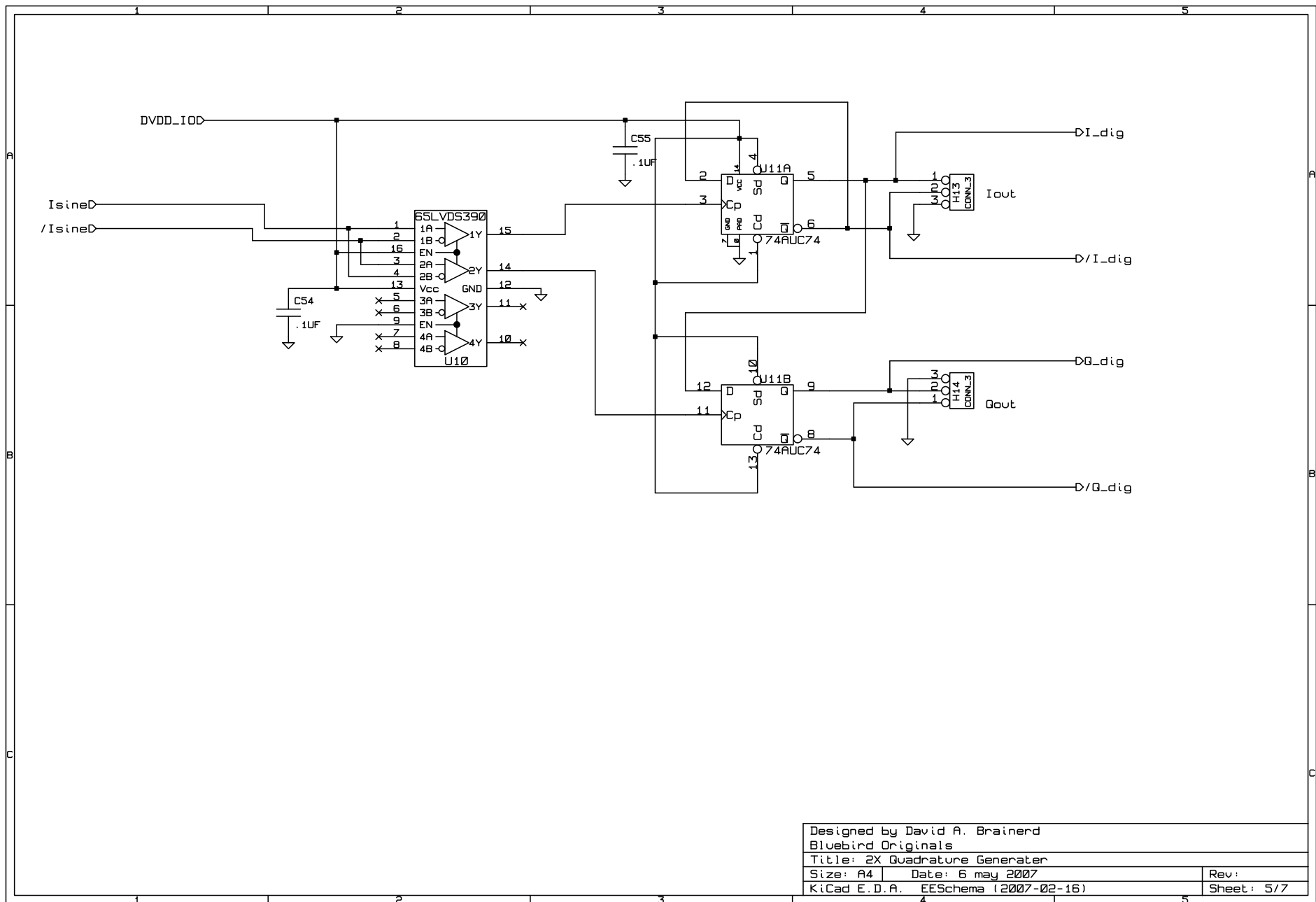
DDS Chip Power Bypass Caps

Designed by David A. Brainerd		Bluebird Originals	
Title: DDS Clock Circuit			
Size: A	Date: 6 may 2007	Rev:	
KiCad E.D.A. EESchema (2007-02-16)		Sheet: 2/7	

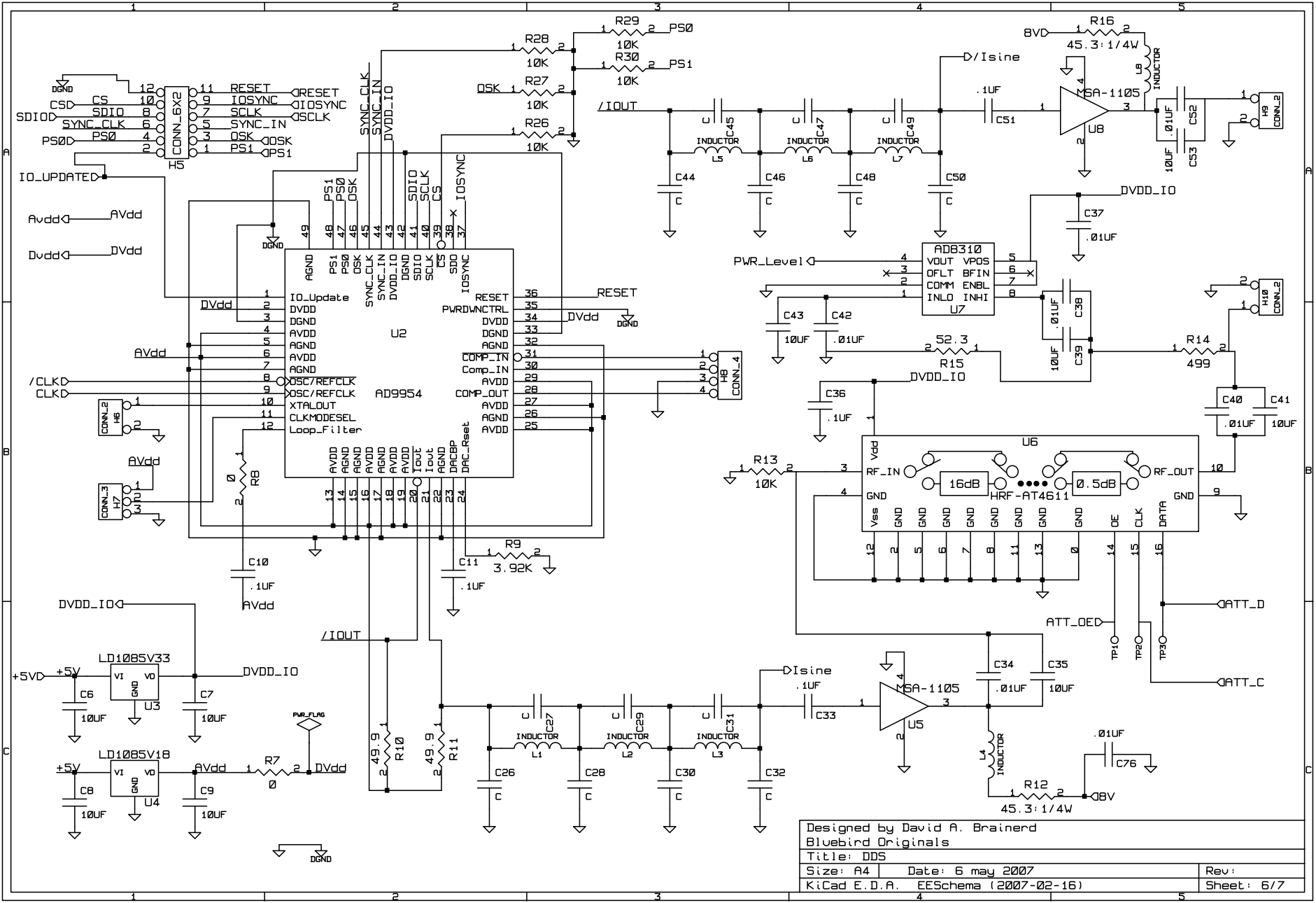


Designed by David A. Brainerd  
 Bluebird Originals  
 Title: QSD  
 Size: A    Date: 6 may 2007    Rev:  
 KiCad E.D.A.    EESchema (2007-02-16)    Sheet: 3/7

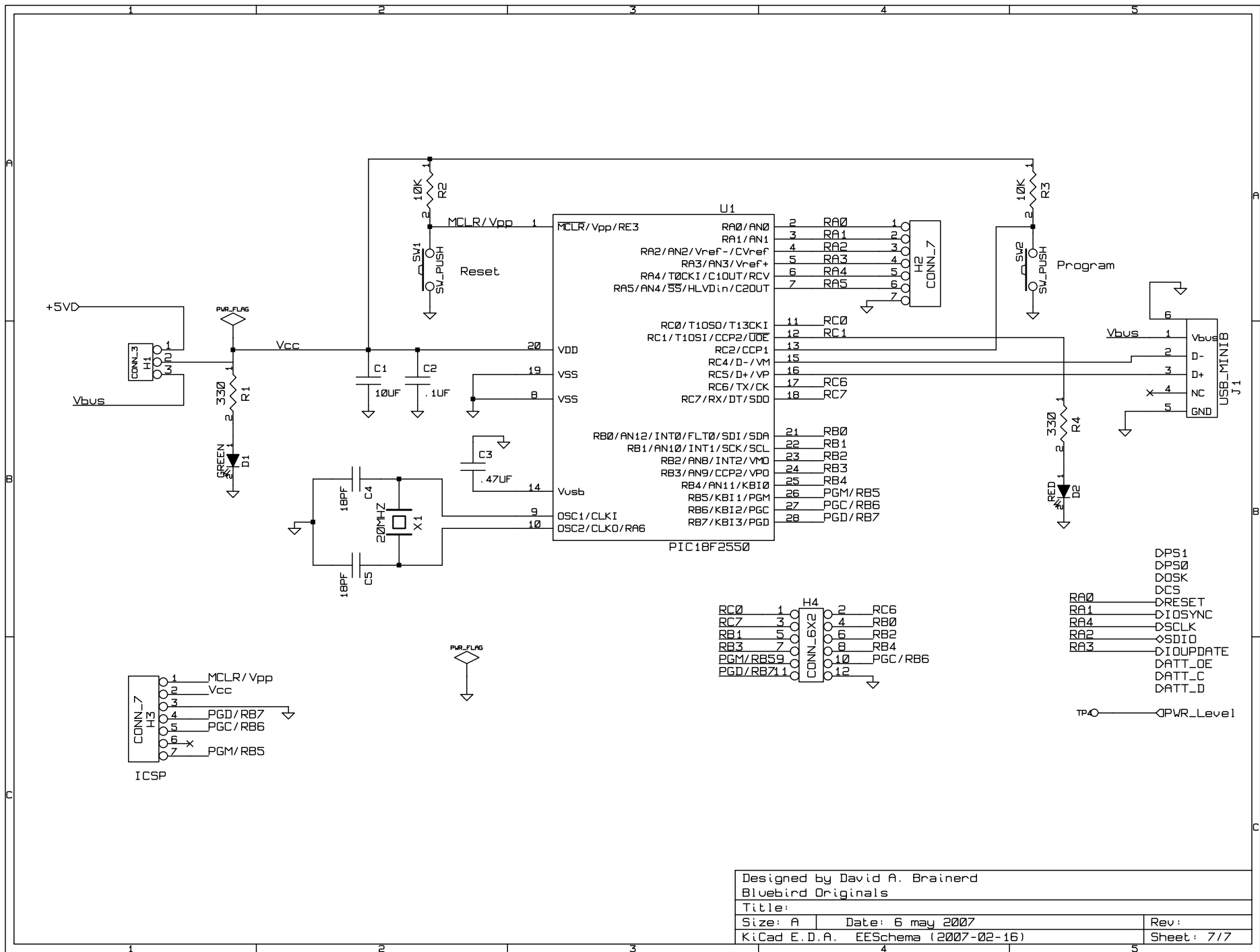




Designed by David A. Bratnerd		
Bluebird Originals		
Title: 2X Quadrature Generator		
Size: A4	Date: 6 may 2007	Rev:
KiCad E.D.A. EESchema (2007-02-16)		Sheet: 5/7



Designed by David A. Brainerd  
 Bluebird Originals  
 Title: DDS  
 Size: A4 Date: 6 may 2007  
 KiCad E.D.A. EESchema (2007-02-16) Rev:  
 Sheet: 6/7



Designed by David A. Brainerd  
 Bluebird Originals  
 Title:  
 Size: A Date: 6 may 2007 Rev:  
 KiCad E.D.A. EESchema (2007-02-16) Sheet: 7/7